

JAIHA

SBU 8000E

BATTERY

Developed for the mining industry. With power for the future.

With the SBU 8000E, Jama is showing the future of mining machines. This new generation of scalers is continuing to build on the market-leading SBU 8000, providing you with even greater efficiency and reliability. And the E in the name also represents a major new feature: The world's first battery-powered scaling machine is here!

Five major benefits

1. Unparalleled ergonomics

The market-leading cabin exceeds all existing occupational health and safety standards and provides you with the perfect conditions for a productive day: A floating cabin ensures minimal low-frequency vibrations. Documented low noise values. Air suspension operator's seat. Tilttable cabin. Heating system with A/C.

2. Battery with built-in safety

Together with Epiroc, we have developed a module-based battery solution with an optimised utilisation rate, which ensures that each individual part of the battery is monitored and controlled separately. It is also the world's first battery for the mining industry that is certified according to and in compliance with CE certification, the Low Voltage Directive, the Electromagnetic Compatibility Directive (EMC) and the Radio Equipment Directive.

3. New, energy-efficient propulsion system

The SBU 8000E also has a new and extremely energy-efficient electric propulsion system. Zero emissions and reduced noise levels contribute to a better working environment in the mine. There is also a reduced need for service and maintenance.

4. Hydraulic system for secure efficiency

New hydraulic valves and a new principle for hydraulic oil purification provide the SBU 8000E with an even more reliable solution and more hours of dependable productivity.

5. New mining-adapted control system

Our new control system is a mobile system that has been developed for harsh mining environments. IP-rated, protected against temperatures and vibrations. Smoother service and maintenance, etc.

A really good deal.

The most efficient power pack on the market has been designed specifically for exposed mining environments and offers an unsurpassed utilisation rate. The operating cost is equivalent to diesel operation, which means that all the advantages in terms of mine ventilation and reduced service and maintenance end up on the positive side of the total economy equation.

The world's first battery-powered scaler – for tough mining environments

- Increased efficiency and reliability
 - Superior ergonomics
 - Best overall economy



Absolutely zero emissions and significant cost savings when it comes to mine ventilation

The machine's new battery operation has been developed in collaboration with Epiroc. This solution delivers the same reliable power as in the diesel scaler, while at the same time satisfying the increasingly stringent demands laid down in the mining sector. This means that the scaling operation is also contributing to a fossil-free mine. Absolutely zero emissions, resulting in significant cost savings when it comes to mine ventilation. In addition, the battery charges automatically during scaling, which means that you never need to "refuel" the machine.



A modular concept for sustainable productivity

Rear shelf

Protects the battery. Reels for power cable and water. Compressor is also available here.



Highly efficient electric motor

160 kW electric motor for transport. Scaling via electric cable. Battery charger with 100 kW charging power that engages automatically during scaling.

Ergonomic cabin

Extremely robust FOPS-approved cab with very low vibration and noise levels. The operator's seat has a three-point seat belt, dual lumbar support and is height-adjustable for maximum operator comfort. All ventilation air to the cab is filtered through a filter system. Heating system with A/C. The cab can be tilted backwards approximately 13° to provide a better overview and comfort during scaling operation. The seat can be rotated for driving forwards or backwards.

Robust axels

Generous axels with hydraulically operated multi-disc brakes.

Support legs

These are used to stabilise the machine during scaling.





Safe and efficient with batteries as a service

Our close cooperation with Epiroc provides you with even more advantages in terms of electric operation. The SBU 8000E delivers a service solution for the vehicle's batteries, where Epiroc offers a unique battery subscription including everything from certification to maintenance. This service also means that they replace the batteries at regular intervals with newer versions and with upgraded technology. You can concentrate on your work and be confident that you will always have highly efficient batteries in your machine.



Robust articulated steering

Articulated steering with a frame joint provides stable operation on uneven surfaces and protects the frame from mechanical stresses.

Powerful boom system

Scaling boom for heavy scaling. All joints have expander shafts and plain bushings to manage the force from the hammer. The hose systems are routed under the boom to protect the hoses. Dimensions and reach specially adapted for mining. The boom system also has a side tilt function for the hammer.

New control system

Control system with an intuitive user interface with a 15.6 inch touchscreen.

Reliable hydraulic system

Load-sensing pumps, sensors for checking pressure, oil level, temperature and filter status.

Dozer blade

Robust dozer blade that improves accessibility during scaling and protects the machine.

Technical specification / SBU 8000E

Technical data

Manufacturer	JAMA Mining Machines
Machine type	Scaling machine Jama SBU 8000E

Dimensions

Height (mm)	3050
Wheelbase (mm)	4640
Width (mm)	2714
Ground clearance (mm)	370
Length in transport mode (mm)	15000
Turning radius (mm)	5200
Total weight (kg)	31,000

Performance

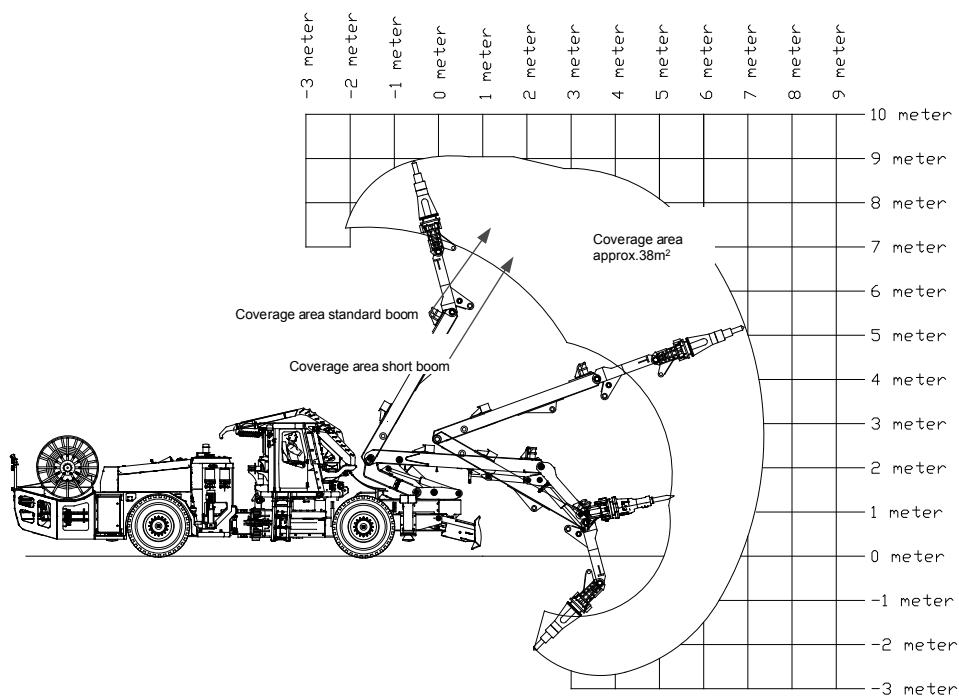
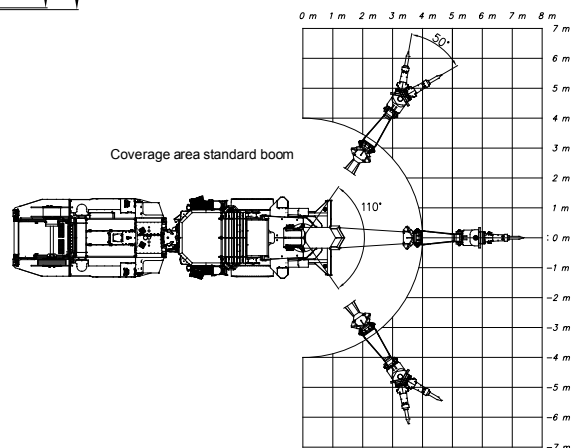
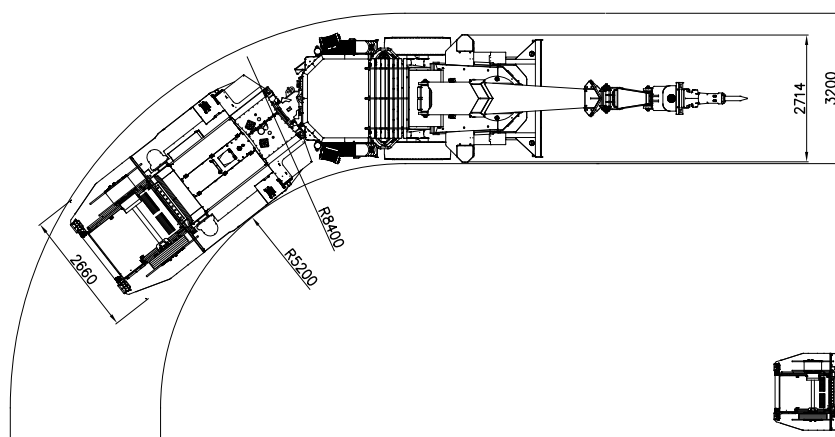
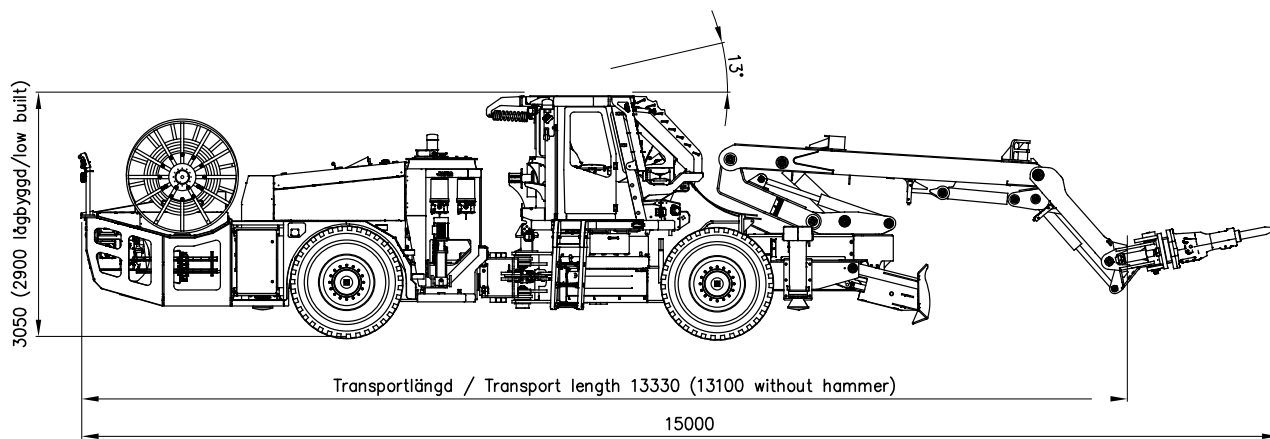
Maximum speed, horizontal (km/h)	20
Maximum speed, 1:7 incline (km/h)	6
Maximum speed, 1:10 incline (km/h)	16
Maximum incline (up or down)	1:4

Chassis

Articulated mining chassis with frame joint and rigid axles	
Modular design with bolted front and rear shelf	
Steering angle	±39°
Dozer blade	Hydraulically operated at the front
Stabilisation	Hydraulic vertical support legs at front and rear

Propulsion system

Electric motor (kW)	160
Battery (kWh)	160
Charging power (kW)	100
Maximum torque (Nm/rpm)	600
Transmission	Dana 3 forward gears, 3 reverse gears with lock-up on all gears
Axles	ZF
Brake	Hydraulically operated multi-disc brakes
Parking brake	Hydraulically operated passive wet multi-disc brake
Tyre dimension (inches)	1400 - 24



SBU 8000E Battery

Jama writes mining history. Again.

1996	SBU 800 – the world's first mechanical scaler
2008	SBU 8000 – named the world's best mining machine
2014	SBU 800B – the world's best-selling scaler
2020	SBU 8000E – the world's first battery-powered scaler



JAMA

Specialists in heavy special machinery
and equipment for the international mining industry.

JAMA Mining Machines AB

Sparrvägen 1
SE-932 33 Skelleftehamn
SWEDEN
Tel: +46 (0) 910 71 36 50

sales@jama.se
www.jama.se